



Centre For Health Economics

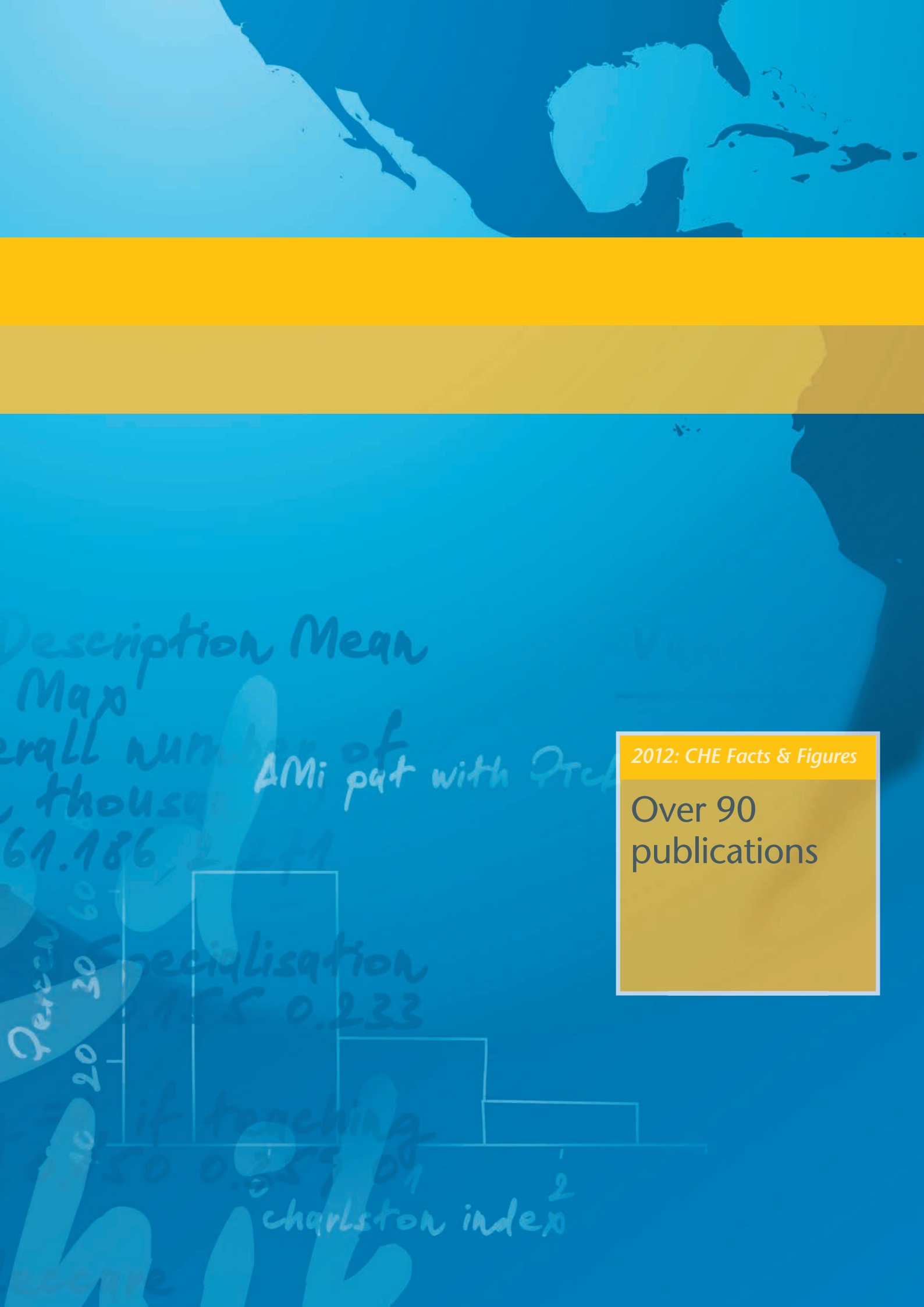
THE UNIVERSITY *of York*

ANNUAL
REPORT
2012

ECONOMIC ANALYSIS
OF WORLDWIDE
REPUTE

INFORMING
POLICY AND
PRACTICE





2012: CHE Facts & Figures

Over 90
publications

CONTENTS

Introduction by Maria Goddard	4
Highlights	6
Ongoing research projects	8
Courses	14
Publications	16
Presentations	21
Staff	26
Honorary fellows and visitors; Alan Williams fellows	33

2012: CHE Facts & Figures

Income £3.5m

er year (in QALYs)

	Maximum NHB
1	1
0	0



WELCOME

I am pleased to introduce the 2012 annual report from the Centre for Health Economics (CHE) which I hope you will find interesting. It has been a productive and busy year for us, especially as we settled into the research on our two major policy programmes funded by the Department of Health. The programmes on the Economics of Social and Health Care Research (ESHCRU) and on the Economic Evaluation of Health and Care Interventions (EEPRU) are now well underway and the list of projects contained in the report illustrates the topics we have been exploring.

This year we have published on a wide range of applied topics exploring the cost-effectiveness of interventions and treatments in the areas of cancer, asthma, epilepsy, heart disease, pressure ulcers, influenza, depression, arthritis and many more. Research projects relating to hospital efficiency, paying for performance and several aspects of equity were also completed. Several of our papers had a European or international dimension, for example, comparing resource use for major clinical procedures in ten European countries; investigating the payment mechanisms used in five countries; and considering the transferability of health technology assessments and guidance for undertaking these assessments, across the world. Our methodological research has covered topics related to the measurement and valuation of health outcomes, microsimulation methods for policy evaluation, statistical methods in cost-effectiveness analysis and analysis of the circumstances in which NICE should seek further evidence before making recommendations on the use of health technologies. We held a research awayday which proved that there is no shortage of exciting ideas and enthusiasm for developing our research and pursuing new areas and we will use these to plan for the future.

I am delighted that both Pedro Saramago Goncalves and Manuel Espinoza successfully defended their PhD and Pedro has since joined us as a research fellow in CHE. We welcomed another four new members of staff and two new PhD students to CHE and we have certainly cast our net across the world as they join us via Portugal, Slovenia, Italy, Netherlands, China and the USA. We said goodbye and thank you to staff members departing for pastures new in Italy, Ireland and the UK. Throughout the year, 350 people from all over the world came to take part in CHE's short courses, details of which can be found later in the report. Some of the courses are now in their 20th year and they have given us many opportunities to interact with colleagues from the academic, policy and practice communities in both the public and private sector.

Several of our staff and students received awards and honours and many more were successful in raising significant funds from a wide range of funders for their future research. 2013 is CHE's 30th year as a research unit and I have no doubt that it will be an interesting and rewarding one: a talented team of staff and students and an exciting research agenda will ensure that is the case.

Professor Maria Goddard

HIGHLIGHTS



Andrea Manca



Marta Soares



Rowena Jacobs



Manuel Espinoza

2012

JANUARY

APRIL

JUNE

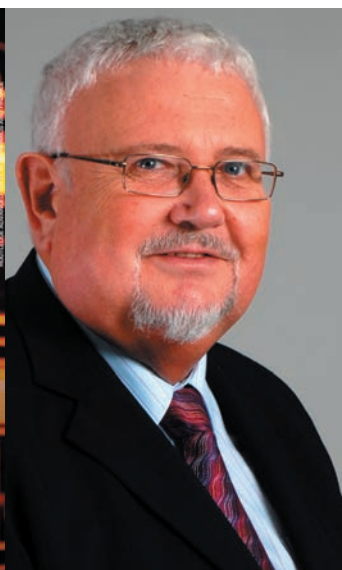
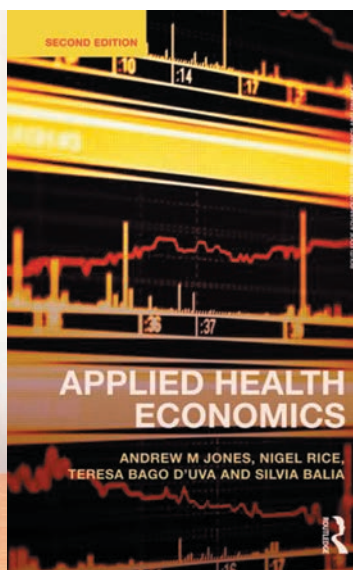
- **Andrea Manca** and **Marta Soares** were appointed as members of the Technology Appraisal Committee of the National Institute for Health and Clinical Excellence for the next three years.

- **Rowena Jacobs** was appointed to the Council of Governors for York Teaching Hospital NHS Foundation Trust.

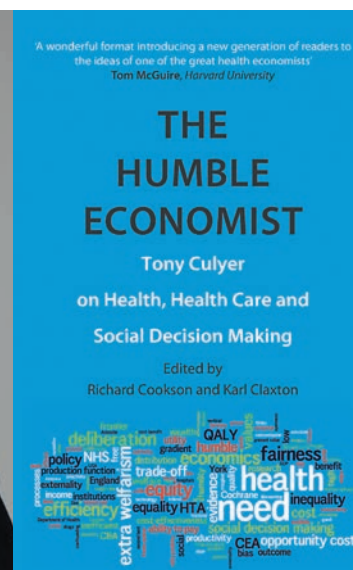
- **Manuel Espinoza** and **Susan Griffin** both won awards at the ISPOR 17th Annual International Meeting held in Washington, USA. Manuel was given a Research Presentation Podium Award and Susan a Research Excellence Award.



Susan Griffin



Michael Drummond



JULY

- Ten people from CHE spoke at the European Conference of Health Economics in Zurich. Presentations covered a range of topics, including physician performance and costs; analyses of hospital finance, efficiency and outcomes; methodological challenges for evaluating long-term care; and dynamic models of smoking and addiction.
- **Maria Goddard** participated as a panel member in the mentoring event organised by the Women's Committee of the Royal Economics Society held at York University which brought together female economists to provide career advice and support.

SEPTEMBER

- *Applied Health Economics* (second edition), edited by Andrew Jones, **Nigel Rice**, Teresa Bago d'Uva and Silvia Balia was published.

OCTOBER

- **Mike Drummond** received the first ever honorary doctorate awarded by the Institute of Health Policy and Management (iBMG) of the Erasmus University Rotterdam. He was also presented with the John Eisenberg Award, by the Society for Medical Decision Making at its annual conference in Phoenix AZ, USA.

NOVEMBER

- *The Humble Economist, Tony Culyer on Health, Health Care and Social Decision Making*, edited by **Richard Cookson** and **Karl Claxton**, was published.

We estimate
Likelihood, since
and efficient in

RESEARCH PROJECTS

IN PROGRESS AND COMPLETED IN 2012

Health Policy

MENTAL HEALTH

Do higher primary care practice performance scores predict lower rates of emergency admissions for persons with serious mental illness? An analysis of secondary panel data

Rowena Jacobs, Maria Goddard, Hugh Gravelle, Nils Gutacker, Anne Mason (CHE), Simon Gilbody, Rachel Richardson (Department of Health Sciences, York), Tony Kendrick (Hull York Medical School), June Wainwright (Durham)

Funder: NIHR HS&DR

Developing the mental health funding formula for allocations in general practices

Hugh Gravelle (CHE), Matt Sutton (Manchester)

Funder: NIHR PRP

Influence of flexible working conditions on psychological health

Rowena Jacobs, Cinzia di Novi

Funder: Alan Williams Fellowship

PAYMENT BY RESULTS

Funding of specialised services

Silvio Daidone, Andrew Street

Funder: Department of Health

PERFORMANCE AND EFFICIENCY ANALYSIS

ECHO: European Collaboration for Healthcare Optimization

Nils Gutacker, Richard Cookson (CHE), Karen Bloor (Department of Health Sciences, York)

Funder: 7th EU Framework Programme

The efficiency of Australian dental practice

Nils Gutacker (CHE), Tony Harris (Melbourne), Bruce Hollingsworth (Lancaster)

New entry in NHS: competitive procurement

Maria Goddard (CHE), Jon Sussex (OHE)

Funder: OHE

Examining variations in costs in the hip fracture care pathway

Adriana Castelli, Silvio Daidone, Rowena Jacobs, Panos Kasteridis, Andrew Street

Funder: Department of Health

Hospital competition and quality: a spatial-econometrics approach

Hugh Gravelle, Rita Santos, Luigi Siciliani

Funder: Department of Health

hospital care, patient out
EQ-5D, performance as
provider profiles

1000
800
600
400

PRODUCTIVITY OF HEALTH CARE

Measuring the productivity of the NHS

Chris Bojke, Adriana Castelli, Andrew Street, Padraic Ward

Funder: Department of Health

Hospital productivity

Adriana Castelli, Andrew Street, Rossella Verzulli, Padraic Ward

Funder: Department of Health

PRIMARY CARE

The impact of 'Choose and Book' on outpatient appointment non-attendances

Mark Dusheiko, Hugh Gravelle

Funder: Medical Research Council

Does quality affect patient choice of general practice?

Rita Santos, Hugh Gravelle (CHE), Carol Propper (Imperial College London)

Funder: Department of Health

SOCIAL AND HEALTH CARE (ESHCRU)

Does the availability of social care reduce delayed discharge?

James Gaughan, Hugh Gravelle, Luigi Siciliani

Funder: Department of Health

Understanding financial mechanisms for integrating funds for health and social care

Anne Mason, Maria Goddard, Helen Weatherly

Funder: Department of Health

The inter-relationship between formal and informal health and social care

Bernard van den Berg, Irene Sanchez

Funder: Department of Health

OTHER PROJECTS

Topical treatments for chronic plaque psoriasis: systematic review update

Anne Mason

Funder: the Psoriasis Association.

Factors affecting the relative effectiveness of medicines in the EU

Anne Mason, in collaboration with OHE

Funder: Pfizer

2012: CHE Facts & Figures

5 new members of staff

RESEARCH PROJECTS

IN PROGRESS AND COMPLETED IN 2012

Health, Econometrics and Data Group (HEDG)

INEQUALITY OF OPPORTUNITY

Equalising opportunities in health through educational policies

Andrew Jones, Pedro Rosa Dias, John Roemer

Funder: ESRC

Long-term health returns to quality of schooling: the role of self-selection and heterogeneity

Anirban Basu, Pedro Rosa Dias, Andrew Jones

Funder: ESRC

Empirical definition of social types in the analysis of inequality of opportunity: a latent class approach

Pedro Rosa Dias, Paolo Li Donni, Juan Gabriel Rodriguez

Funder: ESRC

Cross-country comparison of health inequality where the health measure is ordinal: does the approach to measurement matter?

Nigel Rice, Pedro Rosa Dias, Silvana Robone

Funder: ESRC

THE PERFORMANCE OF HEALTH SYSTEMS AND ORGANIZATIONS

Non-parametric versus parametric approaches to cross-country comparative analysis

Andrew Jones, Nigel Rice, Silvana Robone

Funder: ESRC

Applying beta-type size distributions to healthcare cost regressions

Andrew Jones, James Lomas, Nigel Rice

Funder: ESRC

Comparison of estimators for health care cost regression: a quasi-experimental approach

Andrew Jones, James Lomas, Nigel Rice

Funder: ESRC

THE EVALUATION OF PUBLIC HEALTH INTERVENTIONS THROUGH ECONOMETRIC METHODS AND MICROSIMULATION

A model of the impact of smoking bans on smoking with evidence from bans in England and Scotland

Andrew Jones, Audrey Laporte, Nigel Rice, Eugenio Zucchelli

Funder: ESRC

A dynamic structural model of lifetime smoking consumption, health and addiction

Andrew Jones, Audrey Laporte, Nigel Rice, Eugenio Zucchelli

Funder: ESRC

Parental income and smoking participation in adolescents: implications of misclassification error in empirical studies of adolescent smoking participation

Ijeoma Edoka

Funder: ESRC

Decomposing differences in cotinine distribution between children and adolescents from high and low socioeconomic backgrounds

Ijeoma Edoka

Funder: ESRC

Time and chance happen to them all? Duration modelling versus lifetime incidence of cancer

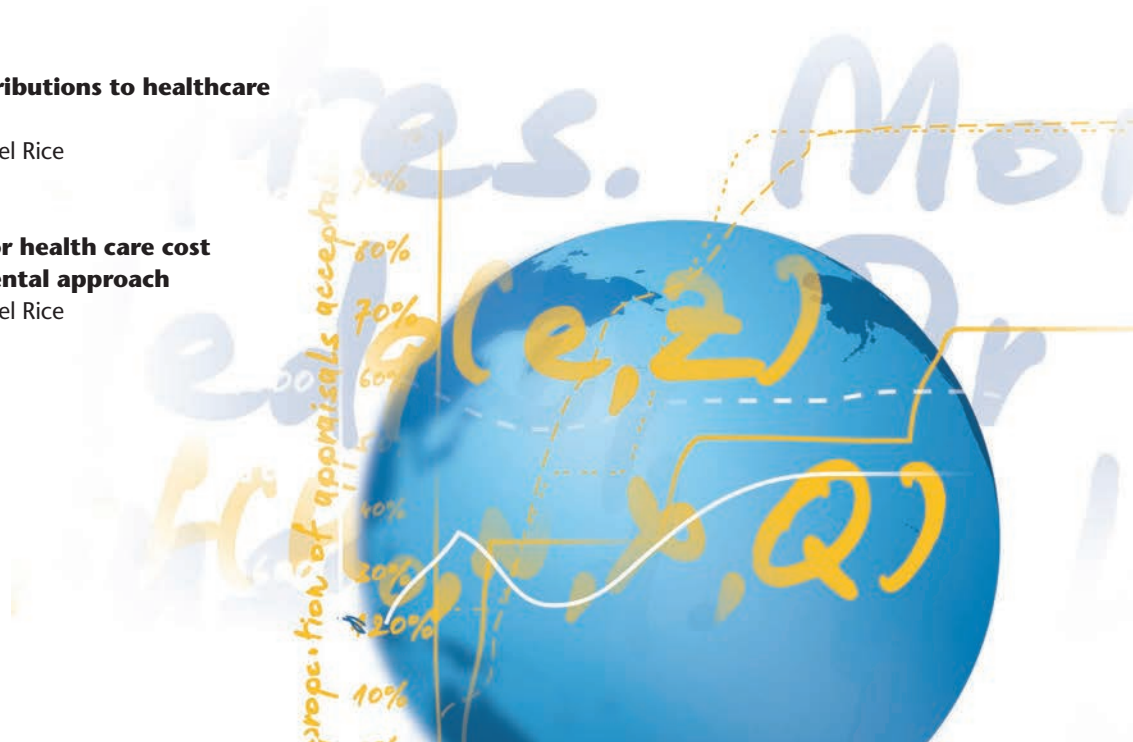
Daniel Howdon

Funder: ESRC

An empirical model of smoking, cancer and mortality: new evidence on the social gradient in cancer

Daniel Howdon, Andrew Jones

Funder: ESRC



Team for Economic Evaluation and Health Technology Assessment (TEEHTA)

TECHNOLOGY ASSESSMENTS FOR NICE

MTAS AND DIAGNOSTIC ASSESSMENTS

DySiS, a digital video colposcope to aid the diagnosis of cervical cancer

Eldon Spackman, Simon Walker, Mark Sculpher

Omalizumab for severe, persistent allergic asthma in patients aged 6+ and adults

Claire McKenna, Rita Faria, Belen Corbacho, Stephen Palmer

STAs

Crizotinib for lung cancer (non-small-cell, anaplastic lymphoma kinase fusion gene, previously treated)

Ana Duarte, Stephen Palmer

Fingolimod for the treatment of relapsing-remitting multiple sclerosis

Marta Soares, Miqdad Asaria, Sebastian Hinde, Stephen Palmer

POLICY AND SERVICE SUPPORT PROGRAMMES

POLICY RESEARCH UNIT IN ECONOMIC EVALUATION OF HEALTH AND CARE INTERVENTION (EEPRU)

Cost effectiveness of early awareness initiatives in lung cancer

Claire McKenna, Sebastian Hinde, Mark Sculpher

Funder: Department of Health

Review of cost effectiveness of surgery and radiotherapy in cancer

Helen Weatherly, Marco Barbieri, Mark Sculpher

Funder: Department of Health

Economic analysis to support value-based pricing

Karl Claxton, Marta Soares, Susan Griffin, Sebastian Hinde, Mark Sculpher, Eldon Spackman

Funder: Department of Health

Developing the methods of economic evaluation for individualised care

Manuel Espinoza, Mark Sculpher, Andrea Manca, Karl Claxton

Funder: Department of Health

Methods of economic evaluation in social care

Helen Weatherly, Rita Faria, Bernard van den Berg, Mark Sculpher

Funder: Department of Health

Methods of economic evaluation when interventions have costs and/or effects outside health

Susan Griffiths, Simon Walker, Mark Sculpher, Rita Faria, Karl Claxton, Helen Weatherly, Bernard van den Berg

Funder: Department of Health

The National Institute for Health Research (NIHR) Research Design Service for Yorkshire & the Humber (RDS YH)

Gerry Richardson, Susan Griffin, Rita Faria

Funder: NIHR

The National Institute for Health and Clinical Excellence Decision Support Unit (DSU)

Stephen Palmer, Claire McKenna, Marta Soares, Eldon Spackman

Funder: NICE

METHODOLOGICAL RESEARCH

Expected health benefits of additional evidence: principles, methods and applications

Karl Claxton, Susan Griffin, Claire McKenna

Funder: Patient-Centered Outcomes Research Institute (PCORI)

Methods of extrapolating RCT evidence for economic evaluation

Stephen Palmer, Andrea Manca, Laura Bojke, Miqdad Asaria

Funder: MRC Methodology Research Programme

Methods for estimation of the NICE cost-effectiveness threshold

Mark Sculpher, Karl Claxton, Nigel Rice, Eldon Spackman, Ling-Hsiang Chaung, Marta Soares, Sebastian Hinde (CHE), Nancy Devlin (Office of Health Economics), Steve Martin (Department of Economics & Related Studies, York), Peter C Smith (Imperial College)

Funder: MRC Methodology Research Programme

Developing economic evaluation methods for decision making: the value of access to individual patient data

Andrea Manca Fellowship

Funder: NIHR Career Development Award (2010-2014)

Identifying appropriate methods to incorporate concerns about health inequalities into economic evaluations of health care programmes

Mark Sculpher, Nigel Rice, Susan Griffin, Karl Claxton, Richard Cookson, Tony Culyer, Miqdad Asaria

Funder: Department of Health Policy Research Programme through the Public Health Research Consortium

Academic fellowship in health economics and public health

Susan Griffin Fellowship

Funder: Research Council UK Academic Fellowship in Health Economics and Public Health

RESEARCH PROJECTS

IN PROGRESS AND COMPLETED IN 2012

Team for Economic Evaluation and Health Technology Assessment (TEEHTA)

Valuation of patient time

Bernard Van Den Berg

Funder: VU University Amsterdam via a Dutch Research Council

Expected value of information and synthesis methods for research prioritisation and study design

Karl Claxton

Funder: MRC

APPLIED RESEARCH

The clinical and cost-effectiveness of technologies used to visualise the seizure focus in people with refractory epilepsy being considered for surgery: a systematic review and decision analytical model

Marta Soares, Sebastian Hinde, Stephen Palmer

Funder: NIHR HTA programme

Tafamidis for the treatment of transthyretin familial amyloid polyneuropathy (TTR-FAP)

Simon Walker, Rita Faria, Stephen Palmer

Funder: NIHR HTA programme

The place of minimal access surgery amongst people with gastro-oesophageal reflux disease – extended follow-up REFLUX-2

Rita Faria, Laura Bojke, David Epstein, Belen Corbacho, Mark Sculpher

Funder: NIHR HTA programme

VenUS IV (Venous leg Ulcer Study IV): A randomised controlled trial of compression hosiery versus compression bandaging in the treatment of venous leg ulcers

Marta Soares, Pedro Saramago

Funder: NIHR HTA programme

AntiRetroviral Research for Wattoto (ARROW) = Young lives: the social contexts and economic realities of paediatric anti-retroviral therapy

Mark Sculpher, Paul Revill, Susan Griffin, Bernard van den Berg

Funder: DFID (via MRC-CTU)

Optimising clinical care strategies and laboratory monitoring for cost-effective roll-out of antiretroviral therapy in Africa: the lab-lite project

Paul Revill, Mark Sculpher, Bernard van den Berg

Funder: The Department for International Development (DFID) (via the Medical Research Council – Clinical Trials Unit (MRC-CTU))

Acupuncture for chronic pain and depression in primary care

Mark Sculpher, Andrea Manca, Helen Weatherly, Pedro Saramago, Eldon Spackman

Funder: NIHR

An exploratory randomised controlled trial of guided self-help for women with chronic pelvic pain (CPP) in primary care

Gerry Richardson

Funder: NIHR Research for Patient Benefit (NIHR RfPB)

Cost-effectiveness of the WISE approach in the management of long-term conditions

Gerry Richardson

Funder: NIHR

Economic evaluation using evidence from the clinical evaluation of magnetic resonance imaging in coronary heart disease (CE-MARC) study

Mark Sculpher, Simon Walker

Funder: British Heart Foundation

PREDICT (A randomised controlled trial of continuous positive airway pressure treatment in older people with obstructive sleep apnoea hypopnoea syndrome)

Susan Griffin, Mark Sculpher, Rita Faria

Funder: NCCHTA

Cost-effectiveness analysis of care planning in the treatment of long term conditions (CAPITOL)

Gerry Richardson

Funder: Department of Health

Evaluating the Family Nurse Partnership Programme in England: a randomised controlled trial

Gerry Richardson

Funder: DH PRP

ICON 7 – A randomised, two-arm, multicentre gynaecologic cancer intergroup trial of adding bevacizumab to standard chemotherapy (carboplatin and paclitaxel) in patients with epithelial ovarian cancer.

Mark Sculpher, Sebastian Hinde, David Epstein

Funder: MRC

Transfusion alternatives pre-operatively in sickle cell disease randomised controlled trial (TAPS RCT)

Mark Sculpher, Eldon Spackman

Funder: NHS Blood & Transplant

METRI°C (ME education, training and resources for primary care)

Gerry Richardson

Funder: NIHR-CCF

Surgical wounds healing by secondary intention: characterising and quantifying the problem and identifying effective treatments

Marta Soares, Karl Claxton, Pedro Saramago

Funder: NIHR

Screening for psychological and mental health differences of young people who offend

Stephen Palmer

Funder: NIHR-CCF

Breathing techniques for breathlessness in lung cancer

Gerry Richardson

Funder: NIHR, Research for Patient Benefit (NIHR RfPB)

A project mapping hospital utilisation and outcomes in six European Union countries ("ECHO" – European Collaboration for Healthcare Optimization)

Richard Cookson

Funder: the European Union

FAST Forward: a randomised clinical trial testing a 1-week course of curative whole breast radiotherapy against a standard 3-week schedule in terms of local cancer control and late adverse effects in women with early breast cancer

Susan Griffin, Mark Sculpher

Funder: NIHR HTA

Does home oxygen therapy (HOT) in addition to standard care improve disease severity and symptoms in chronic heart failure?

Susan Griffin, Mark Sculpher

Funder: NIHR HTA

Wounds research for patient benefit programme

Marta Soares, Pedro Saramago

Funder: NIHR

Improving the quality of care for angina and heart attack

Mark Sculpher, Stephen Palmer, Miqdad Asaria, Simon Walker

Funder: NIHR CCF

BRIGHT (Bringing Information & Guided Help Together)

Gerry Richardson, Eldon Spackman

Funder: NIHR CLARHC (Manchester).

The randomised evaluation of the effectiveness and acceptability of computerised therapy (REEACT) Trial

Mark Sculpher, Stephen Palmer, Simon Walker

Funder: NIHR HTA

Collaboration for leadership in applied health research and care (CLARHC)

Gerry Richardson

Funder: NIHR

Better management of depression in people with cancer (SMART Trial)

Gerry Richardson, Simon Walker, Ana Duarte, Mark Sculpher

Funder: CRUK

Early parenting interventions for families with young children showing severe attachment problems

Stephen Palmer

Funder: NIHR HTA

A randomised controlled trial of protease inhibitor monotherapy versus continuing combination antiretroviral therapy for HIV-1 infected patients previously established on a dual nucleoside combination regimen (PIVOT)

Mark Sculpher

Funder: NIHT HTA

Transforming community health services for children and young people who are ill: a quasi-experimental evaluation

Gerry Richardson

Funder: NIHR HS&DR

A multi-centre randomised controlled trial of spinal cord stimulation plus usual care vs. usual care alone in the management of refractory angina: A feasibility and pilot study. The RASCAL Study

Andrea Manca

Funder: NIHR Research for Patient Benefit

An evaluation of multifunctional magnetic resonance imaging in the diagnosis and characterisation of prostate cancer (PROMIS)

Mark Sculpher, Rita Faria, Eldon Spackman

Funder: NIHR HTA

Adjunctive rifampicin to reduce early mortality from staphylococcus aureus bacteraemia: a multi-centre, randomised, double blind, placebo controlled trial (the ARREST trial)

Marta Soares

Funder: NIHR HTA



CHE offers a wide-ranging programme of workshops and courses in methodological and applied topics for members of the health economics field, including health economists, health care professionals and students. Throughout 2012, over 350 people from all over the world came to York to take part in 7 short courses and workshops run by CHE staff.

York expert workshops in the socio economic evaluation of medicines

To inform and promote understanding in key areas of quality of life assessment and health economic evaluation and to learn how to:

- decide whether a particular evaluation is necessary
- choose a particular methodology
- identify the data required and appropriate instruments for data collection
- undertake appropriate analysis
- communicate the results effectively

There are three different York Expert Workshop courses:

- **Quality of life:** A three-day workshop providing a detailed introduction to the theory and practice of quality of life measurement with particular emphasis on its use in economic evaluation.
- **Foundations of economic evaluation in health care:** This five-day workshop comprehensively covers all key issues in the methodology and practice of economic evaluation.
- **Advanced methods for cost-effectiveness analysis:** A five-day workshop dealing with advanced methods in cost-effectiveness analysis for pharmaceuticals and other health care technologies.

Advanced modelling methods for health economic evaluation

A three-day course focusing on advanced modelling methods for economic evaluation. This course is a collaboration between the University of Glasgow and CHE. The course is aimed at health economists and those health professionals with experience of health economics who wish to learn about recent methodological developments in cost-effectiveness analysis. It is designed for participants who are familiar with basic decision modelling who wish to learn how to use more advanced modelling methods.

Regression methods for health economic evaluation

This course is intended for people currently undertaking health economic evaluations within the pharmaceutical and medical device industries, consultancy, academia or the health service who wish to learn how to use regression methods to analyse individual patient-level cost, effect and cost-effectiveness data. The course includes a mixture of taught modules and practical exercises. This three-day course focuses on the use of regression analysis methods for health economic evaluation of individual patient-level cost, effect and cost-effectiveness data.

Introduction to applied health economics: methods for the analysis of panel data in health and health care

A three-day course focusing on the use of applied quantitative methods for the analysis of panel data encountered in health and health care. The course is run by the Health, Econometrics and Data Group (HEDG) and is aimed at PhD students and junior researchers or policy makers working in applied health economics. It will cover applied health economics methods relevant to the analysis of panel data obtained from administrative or observational sources.



Topics to be covered include:

- linear models and fixed and random effects
- instrumental variables panel data models
- non-linear panel data models
- dynamic panel data models
- discrete-time duration models.

Advanced course in applied health economics: inequalities in health and health care

This three-day course is concerned with the measurement and explanation of inequalities in health and health care. Differences in health by socioeconomic status are pervasive and persistent despite repeated calls for measures to tackle them. Monitoring health inequalities requires measurement instruments. Explanation of health inequalities is a prerequisite to the design of policies that are effective in reducing them.

The aim of the course is to make participants familiar with the main techniques deployed in health economics, and some other disciplines, to quantify and account for inequalities in health and health care. This is realised not only through presentation of the measurement tools but also through hands-on experience with their computation.

Topics covered include:

- conceptual foundations (fair and unfair inequalities, inequality of opportunity, absolute and relative inequality)
- measurement instruments (concentration curve and index)
- statistical inference and dominance
- decomposition techniques
- inequity in health care.

Analysing patient data using hospital episode statistics (HES) to evaluate healthcare policy and practice

This course includes instruction on how to:

- understand, manage and manipulate the data
- construct and analyse key variables such as waiting times or length of stay
- link inpatient and outpatient HES records together and to other datasets
- analyse individual patient records defined as Finished Consultant Episodes, Provider Spells and Continuous Inpatient Spells
- monitor emergency readmissions
- aggregate data by Healthcare Resource Group, hospitals, and groups of general practices
- evaluate Patient Reported Outcome Measures (PROMS)
- use the data for benchmarking and policy evaluation

Introduction to measuring efficiency in public sector organisations: analytical techniques and policy

Areas covered in this course include:

- the context and purpose of productivity and efficiency measurement
- the economic theories underpinning efficiency measurement techniques
- how to conduct analysis
- the similarities and differences between techniques
- the interpretation and application of results to support policy objectives

The workshop introduces participants to computer software (including Limdep, Stata, DEAP, and Frontier Analyst) with which to apply the techniques to data during practical sessions. Throughout the workshop there is a strong focus on the policy interest in these techniques.

Peer reviewed

Allen P, Keen J, Wright J, Dempster PG, Townsend J, Hutchings A, **Street A, Verzulli R**. Investigating the governance of autonomous public hospitals in England: multi-site case study of NHS Foundation Trusts. *Journal of Health Services Research and Policy* 2012;17(2):94-100.

Ashby R, Dumville J, **Soares M**, McGinnis E, Stubbs N, Torgerson D, Cullum N. A pilot randomised controlled trial of negative pressure wound therapy (NPWT) to treat grade III/IV pressure ulcers. *Trials* 2012;13(119).

Bojke C, Castelli A, Street A, Ward P, Laudicella M. Regional variation in the productivity of the English National Health Service. *Health Economics* 2012;doi:10.1002/hec.2794.

Bojke L, Spackman E, Hinde S, Helliwell P. Capturing all of the costs in NICE appraisals: the impact of inflammatory rheumatic diseases on productivity. *Rheumatology* 2012;51(2):210-15.

Bower P, Kennedy A, Reeves D, **Richardson G**. A cluster randomised controlled trial of the clinical and cost-effectiveness of a "whole-systems" model of self management support for the management of long term conditions in primary care: trial protocol. *Implementation Science* 2012;7:7.

Briggs AH, Weinstein MC, Fenwick E, Karnon J, **Sculpher MJ**, Paltiel AD. Model parameter estimation and uncertainty: a report of the ISPOR-SMDM Modelling Good Research Practices Task Force Working Group-6. *Medical Decision Making* 2012;32(5):722-32. (jointly published by agreement in *Value in Health* 2012;15(6):835-42).

Brown S, Dietrich M, **Ortiz-Núñez A**, Taylor K. Business ownership and attitudes towards risk. *Applied Economics* 2012;doi:10.1080/00036846.2011.636026.

Brown S, **Ortiz-Núñez A**, Taylor K. Parental risk attitudes and children's academic test scores: evidence from the U.S. panel study of income dynamics. *Scottish Journal of Political Economy* 2012;59(1):47-70.

Burch J, **Griffin S, McKenna C, Walker S**, Paton J, Wright K, Woolacott N. Omalizumab for the treatment of severe persistent allergic asthma in children Aged 6-11 years: a NICE single technology appraisal. *Pharmacoeconomics* 2012;30(11):991-1004.

Burch J, **Hinde S, Palmer S**, Beyer F, Minton J, Marson A, Wiesmann U, Woolacott N, **Soares M**. The clinical and cost-effectiveness of technologies used to visualise the seizure focus in people with refractory epilepsy being considered for surgery: a systematic review and decision-analytical model. *Health Technology Assessment* 2012;16(34).

Burch J, Marson A, Beyer F, **Soares M, Hinde S**, Wiesmann U, Woolacott N. Dilemmas in the interpretation of diagnostic accuracy studies on presurgical workup for epilepsy surgery. *Epilepsia* 2012;53(8):1294-302.

Burton C, **Richardson G**, Sharpe M. Healthcare costs incurred by repeated referral of patients with medically unexplained symptoms to secondary medical care. *Journal of Psychosomatic Research* 2012;72(3):242-247.

Cabieses B, **Espinoza M**. The power of chameleonic ideas in the policy decision-making process: the case of the "students' revolution" in Chile. *Journal of Education for Teaching: International Research and Pedagogy* 2012;38(4):509-11.

Callery P, Kyle R, **Weatherly H**, Banks M, Ewing C, Powell P, Kirk S. Comparison of the costs of care during acute illness by two community children's nursing teams. *Emergency Medicine* 2012;doi:10.1136/emered-2012-201930.

Chuang LH, **Soares MO**, Tilbrook H, Cox H, Hewitt CE, Aplin J, Semlyen A, Trehwela A, Watt I, Torgerson D. A pragmatic multi-centered randomised controlled trial of yoga for chronic low back pain: economic evaluation. *Spine* 2012;37(18):1593-1601.

Claxton K, Palmer S, Longworth L, **Bojke L, Griffin S, McKenna C, Soares M, Spackman E**, Youn J. Informing a decision framework for when NICE should recommend the use of health technologies only in the context of an appropriately designed programme of evidence development. *Health Technology Assessment* 2012;16.

Cookson R, Laudicella M, Li Donni P. Measuring change in health care equity using small area administrative data – evidence from the English NHS 2001-8. *Social Science and Medicine* 2012;75(8):1514-1522.

Cookson R, Laudicella M, Li Donni P, **Dusheiko M**. Effects of the Blair/Brown health reforms on socioeconomic equity in health care. *Journal of Health Services Research and Policy* 2012;17(Suppl1):55-63.

Costa-Font J, Karlsson M, **Van den Berg B**. Redesigning long-term care finance and delivery. *Applied Economic Perspectives and Policy* 2012;34(2):215-19.

Culyer AJ. Hic sunt dracones: the future of Health Technology Assessment – one economist's perspective. *Medical Decision Making* 2012;32:E25-E32.

Drummond M, Neumann P, Jonsson B, Luce B, Schwartz J, Siebert U, Sullivan S. Can we reliably benchmark health technology assessment organizations? *International Journal of Technology Assessment in Health Care* 2012;28(2):159-65.

Dumville JC, **Soares MO**, O'Meara S, Cullum N. Systematic review and mixed treatment comparison: Dressings to heal diabetic foot ulcers. *Diabetologia* 2012;55:1902-1910.

Favato G, Baio G, Capone A, Marcellusi A, Costa S, Garganese G, Picardo M, **Drummond MF**, Jonsson B, Scambia G, Zweifel P, Mennini F. Novel health economic evaluation of a vaccination strategy to prevent HPV-related diseases. The BEST study. *Medical Care* 2012;50(12):1076-85.

Fleetcroft R, Steel N, **Cookson R**, **Walker S**, Howe A. Incentive payments are not related to expected health gain in the pay for performance scheme for UK primary care: cross-sectional analysis. *BMC Health Services Research* 2012;12(94).

Ford JA, Waugh N, Sharma P, **Sculpher MJ**, Walker A. NICE guidance: a comparative study of the introduction of the single technology appraisal process and comparison with guidance from Scottish Medicines Consortium. *BMJ Open* 2012;2(1).

Gaughan J, Kobel C, Linhart C, **Mason A**, **Street A**, **Ward P**. Why do patients having coronary artery bypass grafts have different costs or length of stay? An analysis across ten European countries. *Health Economics* 2012;21(S2):77-88.

Gutacker N, **Bojke C**, **Daidone S**, Devlin N, Parkin D, **Street A**. Truly inefficient or providing better quality of care? analysing the relationship between risk-adjusted hospital costs and patients' health outcomes. *Health Economics* 2012;doi:10.1002/hec.2871.

Jacobs R, Mannion R, Davies HTO, Harrison S, Konteh F, Walshe K. The relationship between organizational culture and performance in acute hospitals. *Social Science and Medicine* 2012;doi:10.1016/j.socscimed.2012.10.014.

Kontopantelis E, Doran T, **Gravelle H**, Siciliani L, Sutton M, Goudie R. Pay-for-performance and influenza immunization: the impact of raising the bar in the UK Quality and Outcomes Framework. *Health Services Research* 2012;47(3,part 1):1117-36.

Laudicella M, Siciliani L, **Cookson R**. Waiting times and socioeconomic status: evidence from England. *Social Science and Medicine* 2012;74(9):1331-41.

Luce B, **Drummond MF**. Principles for the conduct of comparative effectiveness research. *Journal of Comparative Effectiveness Research* 2012;1(5):431-40.

Mason A, Or Z, Renaud T, **Street A**, Thuilliez J, **Ward P**. How well do DRGs for appendectomy explain variations in resource use? An analysis of patient-level data from 10 European countries. *Health Economics* 2012;21(S2):30-40.

McKenna C, Wade R, **Faria R**, Yang H, Stirk L, Gummerson N, **Sculpher M**, Woolacott N. EOS 2D/3D X-ray imaging system: a systematic review and economic evaluation. *Health Technology Assessment* 2012;16(14):1-188.

McKenna C, **Walker S**, Lorgelly P, Fenwick E, Burch J, Suekarran S, Bakhai A, Witte K, Harden M, Wright K, Woolacott N, **Palmer S**. Cost-effectiveness of aldosterone antagonists for the treatment of post-myocardial infarction heart failure. *Value in Health* 2012;15(3).

Miraldo M, Siciliani L, **Street A**. Price adjustment in the hospital sector, a reply. *Journal of Health Economics* 2012;31(1):323-25.

Mujica-Mota RE, Tarricone R, Ciani O, Bridges JFP, **Drummond MF**. Determinants of demand for total hip and knee arthroplasty: a systematic literature review. *BMC Health Services Research* 2012;12(1).

O'Reilly J, Busse R, Häkkinen U, Or Z, **Street A**, Wiley M. Paying for hospital care: the experience with implementing activity-based funding in five European countries. *Health Economics Policy and Law* 2012;7(1):73-101.

Pattenden J, **Mason A**, Lewin R. Collaborative palliative care for advanced heart failure: Outcomes and costs from the 'Better Together' pilot study. *BMJ Supportive and Palliative Care* 2012;doi:10.1136/bmjspcare-2012-000251.

Pichon-Riviere A, Augustovski F, Marti SG, Sullivan SD, **Drummond MF**. Transferability of health technology assessment reports in Latin America: an exploratory survey of researchers and decision makers. *International Journal of Technology Assessment in Health Care* 2012;28(2):180-86.

Pitman RL, White LJ, **Sculpher MJ**. Estimating the clinical impact of introducing paediatric influenza vaccination in England and Wales. *Vaccine* 2012;30:1208-24.

Revill P, **Sculpher MJ**. Cost effectiveness of interventions to tackle non-communicable diseases. *British Medical Journal* 2012;344:d7883.

Rice N, **Robone S**, Smith P. Vignettes and health systems responsiveness in cross-country comparative analyses. *The Journal of the Royal Statistical Society Series A* 2012;175(2):1-21.

Peer reviewed

Rodgers M, **Asaria M**, **Walker S**, McMillan D, Lucock M, Harden M, **Palmer S**, Eastwood A. The clinical effectiveness and cost-effectiveness of low-intensity psychological interventions for the secondary prevention of relapse after depression: a systematic review. *Health Technology Assessment* 2012;16(28):1-129.

Ryan P, **Revill P**, Devane D, Normand C. An assessment of the cost-effectiveness of midwife-led care in the United Kingdom *Midwifery* 2012;doi:10.1016/j.midw.2012.02.005.

Saramago P, **Manca A**, Sutton AJ. Deriving input parameters for cost-effectiveness modelling: taxonomy of data types and approaches to their statistical synthesis. *Value in Health* 2012;15(5):639-649.

Saramago P, Sutton A, Cooper NJ, **Manca A**. Mixed treatment comparisons using aggregate-and individual-participant level data statistics in medicine *Statistics in Medicine* 2012;31(28):3516-3536.

Sculpher MJ, **Claxton K**. Real economics needs to reflect real decisions: a response to Johnson. *Pharmacoeconomics* 2012;30:133-36.

Shah K, **Cookson R**, **Culyer AJ**, Littlejohns P. NICE's social value judgements about equity in health and health care. *Health Economics, Policy and Law* 2012; doi: 10.1017/S1744133112000096.

Siciliani L, Sivey P, **Street A**. Differences in length of stay for hip replacement between public hospitals, specialised treatment centres and private providers: selection or efficiency? *Health Economics* 2012;doi:10.1002/hec.1826.

Smith PC, **Street A**. On the uses of routine patient-reported health outcome data. *Health Economics* 2012;doi:10.1002/hec.2793.

Soares MO. Is the QALY blind, deaf and dumb to equity? NICE's considerations over equity. *British Medical Bulletin* 2012;101(1):17-31.

Soares MO, Canto E, Castro L. Continuous time simulation and discretized models for cost-effectiveness analysis. *Pharmacoeconomics* 2012;30(12):1101-1117.

Soares MO, Dumville J, Ashby R, **Iglesias C**, **Bojke L**, Adderley U, McGinnis E, Stubbs N, Torgerson D, **Claxton K**, Cullum N. Methods to assess cost effectiveness and value of further research when data are sparse: negative pressure wound therapy for severe pressure ulcers. *Medical Decision Making* 2012;doi:10.1177/0272989X12451058.

Soares MO, Welton NJ, Harrison DA, Peura P, Hari MS, Harvey SE, Madan JJ, Ades AE, **Palmer SJ**, Rowan KM. An evaluation of the feasibility, cost and value of information of a multicentre randomised controlled trial of intravenous immunoglobulin for sepsis (severe sepsis and septic shock): incorporating a systematic review, meta-analysis and value of information analysis. *Health Technology Assessment* 2012;16(7).

2012: CHE Facts & Figures

5 MSc summer placement students

Sorenson C, **Drummond MF**, Chalkidou K. Comparative effectiveness research: the NICE experience. *Journal of Clinical Oncology* 2012;30(34).

Sorenson C, **Drummond MF**. Socio-economic value of orthopedic devices: evidence and methodological challenges. *Orthopedic Research and Reviews* 2012;4:87-96.

Spackman DE, Kadiyala S, Neumann PJ, Veenstra DL, Sullivan SD. Measuring alzheimer disease progression with transition probabilities: estimates from NACC-UDS. *Current Alzheimer Research* 2012;9(9):1050-58.

Street A, Kobel C, Renaud T, Thuilliez J. How well do Diagnosis Related Groups explain variations in costs or length of stay among patients and across hospitals? Methods for analysing routine patient data. *Health Economics* 2012;S21:6-18.

Van den Berg B. SF-6D population norms. *Health Economics* 2012;21(12):1508-1512.

Van Dijk CE, **Van den Berg B**, Verheij RA, Spreeuwenberg P, Groenewegen PP, De Bakker DH. Moral hazard and supplier-induced demand: empirical evidence in general practice. *Health Economics* 2012;doi:10.1002/hec.2801.

Wade R, Yang H, **McKenna C**, **Faria R**, Gummerson N, Woolacott N. A systematic review of the clinical effectiveness of EOS 2D/3D X-ray imaging system. *European Spine Journal* 2012;doi:10.1007/s00586-012-2469-7.

Wagstaff A, **Culyer AJ**. Four decades of Health Economics through a bibliometric lens. *Journal of Health Economics* 2012;31:406-39.

Walker S, **Sculpher M**, **Claxton K**, **Palmer S**. Coverage with evidence development, only in research, risk sharing or patient access scheme? A framework for coverage decisions. *Value in Health* 2012;15(3):570-579.

Wang S, **Chalkley M**, Tilley C. Comparing the treatment provided by UK and non-UK trained health professionals: dentists in Scotland. *Health Services Research & Policy* 2012;17(4):227-232.

Yang H, Craig D, **Epstein D**, **Bojke L**, Light K, Bruce I, **Sculpher M**, Woolacott N. Golimumab for the treatment of psoriatic arthritis: A NICE Single Technology Appraisal. *Pharmacoeconomics* 2012;30:257-70.

Zucchelli E, Jones AM, **Rice N**. The evaluation of health policies through dynamic microsimulation methods. *International Journal of Microsimulation* 2012;5(1):2-20.

Books and Book Chapters

Conigliani C, **Manca A**, Tancredi A. Statistical methods for health care economic evaluation. In: Faltin F, Kenett R, Ruggeri F, editors. *Statistical methods in healthcare*, Wiley, 2012, Chapter 18.

Cookson R, **Claxton K**. *The humble economist. Tony Culyer on health, health care and social decision making*. Office of Health Economics, London and University of York, 2012.

Cookson R, Dawson D. Hospital competition and patient choice in publicly funded health care. In: Jones AM, editor. *The Elgar companion to health economics (second edition)*. Cheltenham: Edward Elgar;2012: chapter 20.

Drummond MF. Economic evaluation and decision makers In: Jones AM, editor. *The Elgar companion to health economics (second edition)*. Cheltenham: Edward Elgar;2012: chapter 54.

Faria R, **Weatherly H**, **Van den Berg B**. A review of approaches to measure and monetarily value informal care. In: Curtis L, editor. *Unit costs of health and social care 2012*. Kent: PSSRU;2012:p.22-31.

Garber AM, **Sculpher M**. Cost-effectiveness and payment policy. In: Pauly MV, McGuire TG, Barros PP, editors. *Handbook in health economics*. Oxford:Elsevier;2012.

Jones AM, **Rice N**, Bago d'Uva T, Balia S. *Applied health economics (second edition)*. London: Routledge, 2012.

Jones AM, **Rice N**, Contoyannis PC. The dynamics of health. In: Jones AM, editor. *Elgar companion to health economics (second edition)*. Cheltenham: Edward Elgar; 2012:chapter 2.

Schut FT, **Van den Berg B**. Long-term care insurance in the Netherlands. In: Costa-Font J, Courbage C, editors. *Financing long-term care in Europe*: Palgrave; 2012.

Smith PC, **Street A**. Concepts and challenges in measuring the performance of health care organizations. In: Jones AM, editor. *The Elgar companion to health economics (second edition)*: Edward Elgar, Cheltenham; 2012:chapter 32.

Towse A, **Drummond MF**, Sorenson C. Measuring value: pharmacoeconomics theory and practice. In: Danzon P, Nicholson S, editors. *The Oxford handbook of the economics of the biopharmaceutical industry*. Oxford: Oxford University Press; 2012. p.394-437.

Walker S, **Griffin S**, **Claxton K**, **Palmer S**, **Sculpher M**. Guest editorial, Appropriate perspectives for health care decisions. In: Curtis L, editor. *Unit costs of health and social care 2012*. Kent: PSSRU; 2012:p.8-11.

CHE Research Papers

74. Analysing hospital variation in health outcome at the level of EQ-5D dimensions – **Nils Gutacker, Chris Bojke, Silvio Daidone**, Nancy Devlin and **Andrew Street**.

75. Twenty years of using economic evaluations for reimbursement decisions. What have we achieved? – **Michael Drummond**.

76. Productivity of the English National Health Service 2003-4 to 2009-10 – **Chris Bojke, Adriana Castelli**, Rosalind Goudie, **Andrew Street** and **Padraic Ward**.

77. Coverage with evidence development, only in research, risk sharing or patient access scheme? A framework for coverage decisions – **Simon Walker, Mark Sculpher, Karl Claxton** and **Steve Palmer**.

78. English hospitals can improve their use of resources: an analysis of costs and length of stay for ten treatments – **James Gaughan, Anne Mason, Andrew Street** and **Padraic Ward**.

79. Well-being and psychological consequences of temporary contracts: the case of younger Italian employees – Vincenzo Carrieri, Cinzia Di Novi, **Rowena Jacobs** and **Silvana Robone**.

80. Hospital quality competition under fixed prices – **Hugh Gravelle, Rita Santos, Luigi Siciliani** and Rosalind Goudie.

Others

Daidone S, Street A. Specialisation hierarchy within the Children's Specialised Services National Definition Set. *Report to Department of Health, Economics of Social and Health Care Research Unit, University of York*; 2012.

Edoka IP. Decomposing differences in cotinine distribution between children and adolescents from different socioeconomic backgrounds. *Health Economics and Data Group (HEDG), University of York 2012;working paper 12/29*.

Howdon D. Time and chance happen to them all? Duration modelling versus lifetime incidence of cancer. *Health Economics and Data Group (HEDG), University of York 2012;working paper 12/06*.

Jones AM, **Rice N**, Robone S. A comparison of parametric and non-parametric adjustments using vignettes for self-reported data. *Health Economics and Data Group (HEDG), University of York 2012;working paper 12/10*.

Maund E, Craig D, Suekarran S, Neilson AR, Wright K, Brealey S, Dennis L, Goodchild L, Hanchard N, Rangan A, **Richardson G**, Robertson J, McDaid C. Management of frozen shoulder: a systematic review and cost-effectiveness analysis. *HTA Report 09/13/02 2012*.

Zucchelli E, Harris M, Zhao X. Ill-health and transitions to part-time work and self-employment among older workers. *Health Economics and Data Group (HEDG), University of York 2012;working paper 12/04*.

2012: CHE Facts & Figures

21 visitors



Bojke C, Daidone S, Devlin N, Gutacker N, Street A.

Lags, panels, caterpillars, funnels and precision weights: methodological challenges in using patient reported outcome measures (PROMs) to measure provider performance. *European Conference on Health Economics, Zurich, Switzerland, July 2012.*

Claxton K, Palmer S, Longworth L, Bojke L, Griffin S, McKenna C, Soares M, Spackman E, Youn J. Unifying research and coverage decisions: how the assessment required can be informed. *Health Technology Assessment International, Bilbao, Spain, June 2012.*

Claxton K, McKenna C, Soares M. Unifying coverage and research decisions: how can quantitative analysis inform the assessments required? *International Society for Pharmacoeconomics and Outcomes Research, Berlin, Germany, November 2012.*

Cookson R. Competition and equity – experience from the UK. *TILEC-Tranzo Conference 'Does Competition in Healthcare Harm Solidarity?' Tilburg, The Netherlands, January 2012.*

Cookson R. Cost-effectiveness and cost-utility analysis of diagnosis and treatment strategies for uncomplicated malaria in Africa. *Population Health – Methods and Challenges Conference, Birmingham, UK, April 2012.*

Daidone S, Castelli A, Jacobs R, Street A. Examining variations in provider costs in the hip fracture care pathway. *European Conference on Health Economics, Zurich, Switzerland, July 2012.*

Daidone S, Street A. The cost efficiency of English hospitals. *European Conference on Health Economics, Zurich, Switzerland, July 2012.*

Drummond M. Using hospital payments to encourage the cost-effective use of health technology. *European Conference on Health Economics, Zurich, Switzerland, July 2012.*

Drummond M. Can we afford innovation in medicine? Rewarding for risk. *ABPI Annual Conference, London, UK, April 2012.*

Drummond M. Value based pricing for pharmaceuticals. *Economic Research Council, London, UK, April 2012.*

Drummond M. Assessing the added value of health technologies: reconciling different perspectives. *EABIS Conference, Sustaining and Implementing Universal Health Coverage: 4 Perspectives for 5 Continents, Milan, Italy, February 2012.*

Dusheiko M, Gravelle H. Did choice and book reduce outpatient non-attendance? *Centre for Health Economics, Monash University, Melbourne, Australia, February 2012.*

Goddard M. Financial incentives in health, the World Health Organization Headquarters "Global Health Histories" seminar series, Geneva, Switzerland, June 2012.

Gutacker N, Bojke C, Daidone S, Devlin N, Street A. Analysing hospital variation in health outcome at the level of EQ-5D dimensions. *Health Economic Study Group Meeting, Aix-en-Provence, France, January 2012.*

Gutacker N, Bojke C, Daidone S, Devlin N, Street A. Analysing hospital variation in health outcome at the level of EQ-5D dimensions. *European Conference on Health Economics, Zurich, Switzerland, July 2012.*

Gutacker N, Bojke C, Devlin N, Street A. The joint evaluation of hospital cost and quality performance: new evidence from the English PROM initiative. *Health Economic Study Group Meeting, Oxford, UK, June 2012.*

Gravelle H, Hole A, Hussein M. Response bias in satisfaction surveys: English GPs. *Health and Wellbeing Conference, Melbourne, Australia, February 2012.*

Gravelle H, Sivey P, Scott A, Yung Y. Competition, prices and quality: the market for Australian GPs. *Network of Industrial Economists Conference on Competition Issues in the Health and Pharmaceutical Sectors, British Academy, UK, December 2012.*

Griffin S. Incorporating health inequality concerns into cost effectiveness analysis to support decision-making. *Population Health -Methods and Challenges Conference, Birmingham, UK, April 2012.*

Griffin S. Incorporating health inequality concerns into cost effectiveness analysis to support decision making, *SchARR, University of Sheffield, UK, June 2012.*

Griffin S. Incorporating health inequality concerns into cost-effectiveness analysis to support decision making, *Biostatistics Research Group, University of Leicester, UK, September 2012.*

Griffin S. An integrated formal framework for reimbursement, research and pricing deliberations in health technology assessment. *ISPOR, Berlin, Germany, November 2012.*

Howdon D, Jones AM. An empirical model of smoking, cancer and mortality: new evidence on the social gradient in cancer. *Health and inequality across the life cycle: employment and behavioural pathways NETSPAR conference, Erasmus University, Rotterdam, The Netherlands, September 2012.*

Jacobs R. The economics of funding flows in the English NHS: Payment by Results (PbR). *Medi-Clinic Southern Africa, Cape Town, South Africa, January 2012.*

Jacobs R. Variations in efficiency in mental health services in the English NHS: An analysis of patient-level data. *World Psychiatric Association Thematic Conference, Granada, Spain, February 2012.*





Jacobs R. Payment by Results (PbR) for mental health services. *Leeds and York Partnership NHS Foundation Trust, UK, March 2012.*

Jacobs R. Cross-country comparison of efficiency of mental healthcare systems in *OECD countries*. *OECD, Paris, France, March 2012.*

Jacobs, R. Towards foundation status for all. *Westminster Health Forum Keynote Seminar on NHS provider policy: competition, licensing and towards foundation status for all, London, UK, November 2012.*

Lomas J. Applying beta-type size distributions to healthcare cost regressions. *HERO-seminar, University of Oslo, Norway, December 2012.*

Manca A. Health Technology Assessment (HTA). *Drug Information Agency (DiA), Zurich, Switzerland, November 2012.*

Manca A. Maximising the value of access to individual patient level data for decision making. Keynote speech, *Danish Health Econometrics Network meeting, Aalborg, Denmark, November 2012.*

Manca A. Developing economic evaluation methods for decision making: the value of access to individual patient data. Presented at a series of invited seminars at *Erasmus (Rotterdam), Amsterdam, and Maastricht University in The Netherlands, The Netherlands.*

Mason A, Street A, Gaughan J, Ward P. The good, the bad and the ugly: investigating variations in efficiency in hospitals in the English NHS. *European Conference on Health Economics, Zurich, Switzerland, July 2012.*

Mason A. Lessons learnt from the EuroDRG project: DRGs for appendectomy. *European Conference on Health Economics Zurich, Switzerland, July 2012.*

McKenna C. Optimal shopping: an evaluation of decision rules in cost-effectiveness analysis. *Health Economics Research Centre, University of Oxford, UK, May 2012.*

McKenna C. Impact of irrecoverable costs on approval, pricing and research decisions for health technologies. *American Society of Health Economists, University of Minnesota, USA, June 2012.*

McKenna C. Using value of information analysis to address adoption and research decisions. *Warwick Medical School, UK, Nov 2012.*

Revill P. Economic issues in the evaluation of HIV/AIDS treatment interventions, Special Seminar on the Economics and Ethics in the Global Response to HIV/AIDS, *Centre for Philosophy, Justice and Health, University College London, UK, May 2012.*

Revill P, Walker S, Sculpher M. The cost-effectiveness of maternal and infant antiretroviral regimens to prevent vertical HIV transmission, *International AIDS Economics Network (IAEN)*, plenary presentation, Centre for Global Development, and AIDS2012 Meeting of the International AIDS Society, Walter E Washington Convention Centre, Washington DC, USA, July 2012.

Rice N. Discussion of paper 'Estimating structural mean models with multiple instrumental variables using the generalised method of moments.' By Clarke PS, Palmer TM, Windmeijer F (2012). *Twenty First European Workshop on Econometrics and Health Economics*, The Arne Ryde Foundation, University of Lund, Sweden, September 2012.

Rice N. Discussion of paper 'Non-linearities and threshold effects in non-linear models: applications to health data' by Gannon B, Harris M. *Applied Health Econometrics Symposium*, University of Leeds, UK, October 2012.

Richardson G. The NIHR RDS for Yorkshire and the Humber. *NEYNL CLRN Respiratory Meeting Specialty group*. Park Inn Hotel, York, UK, September 2012.

Richardson G. The NIHR RDS for Yorkshire and the Humber. *NEYNL CLRN Infectious Diseases Specialty group*, Castle Hill Hospital, Hull, UK, September 2012.

Richardson G. Cost-effectiveness of a nurse facilitated, cognitive behavioural self-management programme compared with usual care for patients with heart failure. *ISPOR conference Berlin*, Germany, podium presentation and poster. November 2012.

Santos R, Gravelle H, Propper C. Does quality affect patient choice of general practice? *Health Economists Study Group*, Aix-en-Provence, France, January 2012.

Saramago P. The value of further research: the added value of individual-participant level data, *ISPOR European conference*, Berlin, Germany, November 2012.

Sculpher M. Economics agenda for development of effective personalized medicine strategies: value of information. *First Annual Health Economics and Personalised Medicine Conference hosted by Centre for Public Health Research in Luxembourg*. June 2012.

Sculpher M. Value based pricing for prescription drugs: defining a scheme to align the incentives of payers, manufacturers and prescribers. *11th National Conference of the Association of Italian Health Economists*, Italy, June 2012.

Soares M, Claxton K, Towse A, McKenna C. Unifying coverage and research decisions: how can quantitative analysis inform the assessments required? The case study of clopidogrel, *ISPOR 15th Annual European Congress*, Berlin, Germany, November 2012.

Soares M, Palmer S, Griffin S, Bojke L, McKenna C, Spackman E, Claxton K. Representing uncertainty and its consequences in cost-effectiveness analyses, *9th HTAi Annual Meeting. HTA in Integrated Care for a Patient Centered System*, Bilbao, Spain, June 2012.

Spackman E. Beyond phase III: bridging the access gap and addressing the payer perspective. *Conference Breaking Barriers: Maximising Research & Development Opportunities in the UK*, UK, 2012.

Spackman E. Economic evaluations in health and the role of NICE. *University of Bristol*, UK, 2012.

Spackman E. Uncertainty, evidence and irrecoverable costs: informing approval, pricing and research decisions for health technologies. *University of Alberta and University of Calgary*, Canada, 2012.

Spackman E. Cost-effectiveness appraisals: value base pricing and the threshold in the UK. *University of Tokyo*, Japan, 2012.

Spackman E, McKenna C, Griffin S, Soares M, Bojke L, Palmer S, Claxton K. Assessing the significance of irrecoverable opportunity costs: implication for reimbursement, pricing and research decisions. *HTAi Bilbao*, Spain, 2012.

Street A. Measuring NHS productivity. *The Association of Clinical Pathologists*, London, UK, February 2012.

Street A. Pay for performance: the English experience of rewarding hospitals on the basis of patient reported outcomes. *Spanish Health Economics Conference*, Bilbao, Spain, May 2012.

Street A, Kobel C. The ability of DRG systems to explain variation in resource consumption. *European Conference on Health Economics*, Zurich, Switzerland, July 2012.

Street A. Public health price regulation. Plenary address to the *Hospital Association of South Africa (HASA) annual conference*, Cape Town, South Africa, September 2012.

Street A. Reasons for variations in hospital outcomes. Patient Reported Outcome Measures (PROMs). *Research Conference*, King's Fund, London, UK, November 2012.

Street A. The sustainability of health systems - an international perspective. Keynote speaker, *Swiss Academies of Arts and Sciences*, Berne, Switzerland, December 2012.

Street A. Patient reported outcome measures and health economics. *PROMS Summit*, Manchester Conference Centre, UK, December 2012.

Van Den Berg B. Key challenges for the Dutch system of managed competition Seminar *Health Economics Unit*, University of Birmingham, UK, November 2012.

Weatherly H, Faria H, Al-Sharayri M, van den Berg B, Sculpher M. A review of economic evaluations of care interventions: methodological controversies and issues, *European Conference on Health Economics, Zurich, Switzerland, July 2012.*

Weatherly H, Faria H, Al-Sharayri M, van den Berg B, Sculpher M. Methodological challenges and issues in economic evaluations of long term care interventions, *2nd International Conference on Evidence-Based Policy in Long-Term Care, London School of Economics, UK, September 2012.*

Zucchelli E. Do smoking bans have an impact on active smoking? *Spanish Health Economics Association, Bilbao, Spain, May 2012.*

Zucchelli E. A dynamic structural model of lifetime smoking, health and addiction. *European Conference on Health Economics (ECHE), Zurich, Switzerland, July 2012.*

Zucchelli E. A dynamic structural model of lifetime smoking, health and addiction *Leeds Academic Unit of Health Economics, University of Leeds, UK, June 2012.*

Zucchelli E. A dynamic structural model of lifetime smoking consumption, health and addiction. *Netspar, Rotterdam, The Netherlands, September 2012.*

WORKSHOPS

Bojke C, Street A. On the feasibility of directly adjusting hospital output for quality in an international context. *OECD and Statistics Netherlands Purchasing Power Parities Workshop, The Hague, The Netherlands, June 2012.*

Lomas J. Applying beta-type size distributions to healthcare cost regressions. *Annual Health Econometrics Workshop, Hunter College, City University of New York, USA, September 2012.*

Lomas J. Applying beta-type size distributions to healthcare cost regressions. *Health Econometrics Workgroup, University of Wisconsin-Madison, USA, May 2012.*

Santos R, Gravelle H, Propper C. Does quality affect patient choice of general practice? *Health Economics Workshop, Melbourne Institute for Economic and Social Research, Australia, February 2012.*

Soares M, Palmer S, Griffin S, Bojke L, McKenna C, Spackman E, Claxton K. An illustrated framework for representing uncertainty and its consequences in health technology appraisals, *Portuguese Health Economics Association workshop, Evora, Portugal, September 2012.*

Weatherly H, Drummond M. Assessing the challenges of applying standard methods of economic evaluation to public health interventions, *University of Glasgow workshop in public health and economic evaluation, UK, 2012.*



Figure 1 Growth in expenditure on non-NH bodies (base=2003/4)

STAFF

Research Staff



Maria Goddard
Professor and Director of CHE



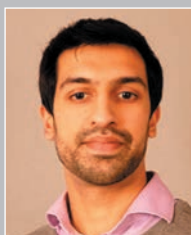
Adriana Castelli
Research Fellow



Silvio Daidone
Research Fellow



James Gaughan
Research Fellow



Miqdad Asaria
Research Fellow



Martin Chalkley
Professor



Michael Drummond
Professor



Hugh Gravelle
Professor



Chris Bojke
Senior Research Fellow



Karl Claxton
Professor of Economics



Mark Dusheiko
Senior Research Fellow



Susan Griffin
Senior Research Fellow



Laura Bojke
Senior Research Fellow



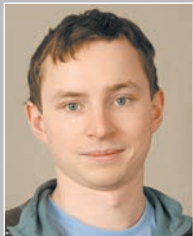
Richard Cookson
Reader



Rita Faria
Research Fellow



Nils Gutacker
Research Fellow



Sebastian Hinde
Research Fellow



Claire McKenna
Research Fellow



Nigel Rice
Professor



Irene Sanchez
Research Fellow



Rowena Jacobs
Senior Research Fellow



Aurora Ortiz-Nunez
Research Fellow



Gerry Richardson
Senior Research Fellow



Rita Santos
Research Fellow



Andrea Manca
Professor



Stephen Palmer
Professor



Silvana Robone
Research Fellow



Mark Sculpher
Professor



Anne Mason
Senior Research Fellow



Paul Revill
Research Fellow



Pedro Rosa Dias
Research Fellow



Marta Soares
Research fellow

STAFF

Research Staff



Eldon Spackman

Research Fellow



Simon Walker

Research Fellow



Andrew Street

Professor



Padraic Ward

Research Fellow



Bernard van den Berg

Reader



Helen Weatherly

Senior Research Fellow



Rossella Verzulli

Research fellow



Eugenio Zucchelli

Research Fellow

New Research Staff



Ana Duarte

Research Fellow

Ana joined TEEHTA in November 2012 after obtaining an MSc in Health Economics at the University of York. Ana also holds a Pharmacy degree from the University of Lisbon, and has previously worked as a pharmacist in Portugal.



Katja Grasic

Research Fellow

Katja joined the Health Policy Team in October 2012. She holds a diploma [MSc] in Mathematics from the University of Ljubljana and has previously worked in Slovenia on several projects in the areas of care pathways and investigation of anomalies in the reported DRG data.



Panos Kasteridis

Research Fellow

Panos joined the Health Policy Team in October 2012. He holds an MA and a PhD in Economics both from the University of Tennessee (UT). Before joining the Health Policy team, Panos worked in the health insurance industry as a project manager and research analyst in the Health Policy Research and Medical Informatics divisions in BlueCross BlueShield of Tennessee. He also held a post-doctoral associate position in the department of Agricultural & Resource Economics at UT. His research interests are in microeconomic methods applied to health economics as well as agricultural and consumer economics.



Giuseppe Moscelli

Research Fellow

Giuseppe joined the Health Policy Team in October 2012. He holds a Master of Science (MSc) in Finance from Bocconi University, and is currently

enrolled in the PhD Program in Econometrics and Empirical Economics of Tor Vergata University in Rome. His research interests lie in microeconomic methods applied to health, labour and education economics.



Pedro Saramago Goncalves

Research Fellow

Pedro joined TEEHTA after completing the MSc in Health Economics at the University of York in 2008. He holds a degree in Applied

Mathematics – Probabilities and Statistics (2003) and a post graduation in Biostatistics (2007), both from the University of Lisbon. As a biostatistician and a health economist, Pedro worked for the Portuguese National Association of Pharmacies (2004) and for a health economics consultancy (2005-2007). His research interests are centered on the synthesis of evidence and the economic evaluation of healthcare technologies.

Figure 1 Growth in expenditure on non-communicable diseases (base=2003)

TFP = ITL

charlson index

STAFF

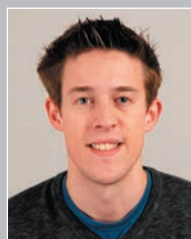
PhD Students



Estela Capelas Barbosa



Iftekher Hossain



Thomas Patton

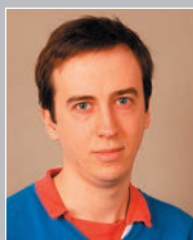


Chen Chen

Chen is supervised by Bernard Van Den Berg and her research topic is on measuring population health needs. She holds a degree in Economics from Wuhan University, China and an MSc in Health Economics from the University of York. She has also worked at the Department of Health on a summer placement (2012) looking at Patient Reported Outcome Measures (PROMs).



Laure de Preux



Daniel Howdon



Yeunsook Rho



Ijeoma Edoka



James Lomas



Laetitia Schmitt



Manuel Espinoza



Ronan Mahon



Victor Zarate

Administrative and Support Staff



Christoph Kronenberg

Christoph is supervised by Rowena Jacobs and his research topic is socioeconomic factors and their interaction with mental health. He holds a BSc in Economics from Erasmus University Rotterdam, and an MSc in Health Economics from the University of York. He has also undertaken a summer placement at the New University of Lisbon in 2012, researching catastrophic healthcare expenditure.



Kerry Atkinson
Administrator



Liz Grant
*Finance and Research
Support Officer*



Trish Smith
Centre Manager



Linda Baillie
Administrator



Vanessa King
*Administrator and
Assistant to the
Director*



Vanessa Wood
*Finance and Research
Support Co-ordinator*



Gill Forder
Publications Administrator



Gillian Robinson
Administrator



John Galloway
Computer Support Officer



Frances Sharp
Publications Manager

HONORARY FELLOWS AND VISITORS

Professors, fellows and visitors

HONORARY PROFESSORS

- **Roy Carr-Hill**
1 September 2011 – 31 August 2014

- **Nancy Devlin**
August 2009 – August 2015

- **Paul Kind**
February 2011 – 31 January 2014

- **Peter C Smith**
January 2011 – January 2014

HONORARY VISITING FELLOWS

- **David Epstein**
February 2011 – 31 January 2014

- **Neil Hawkins**
June 2009 – June 2012

- **Christopher Henshall**
August 2008 – July 2013

- **Jon Sussex**
July 2011 – June 2014

VISITORS TO CHE DURING 2012

- **Eline Aas**
University of Oslo, Norway
January –June 2012

- **Professor Alistair McGuire**
London School of Economics, UK
January–April 2012

- **Professor Patricia Soares**
Department of Preventive Medicine
at São Paulo University (USP),Brazil
January–March 2012

- **Chris Jackson**
MRC Biostatistics Unit, Cambridge, UK
January 2012

- **Ana Godoy Caballero**
University of Extremadura, Spain
February–July 2012

- **Erik Koffijberg**
University Medical Center, Utrecht, The Netherlands
March–June 2012

- **Ulises Garay**
Institute for Clinical Effectiveness and Health Policy,
University of Buenos Aires, Argentina
2–5 April and 16–20 July 2012

- **Peter Sivey**
University of Melbourne, Australia
14–25 May 2012

- **Jeruza Neyeloff**
The Federal University of Rio Grande do Sul, Brazil
July 2012

- **Jeff Hoch**
The University of Toronto, Canada
July 2012

- **Mar Yebra Granados**
The National Distance Education University (UNED),
Madrid, Spain
September 2012

- **Jongsay Yong**
University of Melbourne, Australia
July 2012

- **Niels Groeneweg**
VU University, Amsterdam, The Netherlands
August 2012

- **Laura di Giorgio**
University of Lugano, Switzerland
August–November 2012

- **Javier Diez**
The National Distance Education University (UNED),
Spain
August 2012

- **France Portrait**
VU University, Amsterdam, The Netherlands
August–September 2012

Laura McCullagh, Michael Barry
and Cathal Walsh

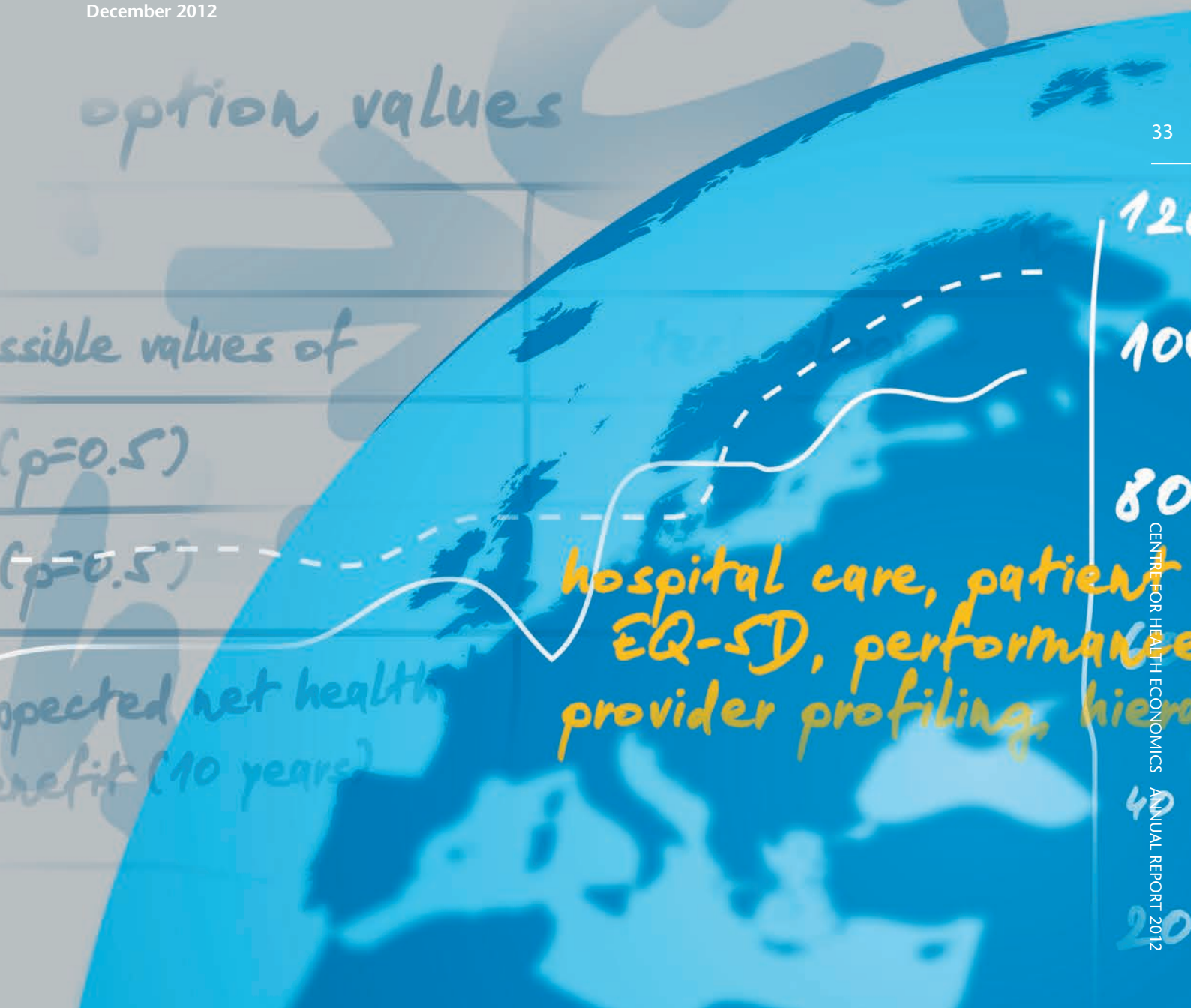
The National Centre for Pharmacoeconomics,
NCPE Ireland
September 2012

■ **Paola Salari**

University of Lugano, Switzerland
September 2012

■ **Silvana Robone**

University of Bologna, Italy
December 2012



HONORARY FELLOWS AND VISITORS

Professors, fellows and visitors

ALAN WILLIAMS FELLOWS

The Alan Williams Fellowships scheme was first launched in 2006 as a tribute to Professor Alan Williams and to enable health economists from anywhere in the world to spend time at the Centre for Health Economics in York, UK.

Line Kongstad was awarded the Alan Williams Fellowship and visited CHE from 1 November 2012–28 February 2013. Line is a PhD student from COHERE - Centre of Health Economics Research, Department of Business and Economics, University of Southern Denmark. Line's main field of research is hospital reimbursement schemes and the primary focus of her research project is 'Problems associated with reimbursing hospitals - do highly specialised units comprise systematically higher costs?'

Cinzia Di Novi from the Department of Economics, Università Ca' Foscari in Venice, Italy was awarded an Alan Williams Fellowship to visit CHE from November 2011 to April 2012. Cinzia's project focussed on the influence of flexible working conditions on the mental and general health and wellbeing of Italian employees. She looked at the impact of temporary employment contracts on health and well-being using Italian data.

Carrieri V, Di Novi C, Jacobs R, Robone S. Well-being and psychological consequences of temporary contracts: the case of younger Italian employees. Centre for Health Economics, University of York; CHE Research Paper 79 (PDF, 342kb), 2012.

PAST FELLOWS:

- **Cinzia Di Novi**
November 2011- April 2012

- **Rena Conti**
May-June 2009

- **Anirban Basu**
April-June 2008

- **Ismo Linnosmaa**
Feb-July 2008

- **Matteo Galizzi**
2007 & 2008

- **Giuliana de Luca**
August-December 2007

- **Aleksandra Torbica**
June-September 2007

- **Victor Zarate**
January-April 2007

2012: CHE Facts & Figures

2 new books

Centre for Health Economics
University of York
YORK YO10 5DD UK

Tel: +44 (0)1904 321401
Fax: +44 (0)1904 321402

Email: che-web@york.ac.uk
Web: www.york.ac.uk/che



THE UNIVERSITY *of York*

www.modedesign.tv

